

This Presentation

- Description of IBAs in Inuit regions
- Strengths and Weaknesses
- Opportunities and Challenges
- What the future holds



IBA = Impact and Benefit Agreement

- Private, legally binding agreement between Inuit organizations and resource developers
- ‘Voluntarily’ negotiated on a project-specific basis – e.g. Voisey’s Bay (2002 IBA, Labrador Inuit), Meadowbank (2006 IBA, Kivalliq-Nunavut)
- Provides assurance to Inuit to receive benefits from a major resource development project



You can find more info on this web site:

IBA Research Network

www.impactandbenefit.com

Negotiating an IBA is required on Inuit lands

Nunatsiavut

Labrador Inuit Land
Claims Agreement 2005
– IIBAs required

Nunavik

James Bay and Northern
Québec Agreement (1975)
+ Sanarrutik partnership
agreement with Québec
(2002)+ Nunavik regional
government 2011

Nunavut

Land Claims
Agreement 1993 –
IIBAs required

Inuvaluit

Final Agreement 1984 –
Partnership Agreements
required



MINING PROJECTS WITH IBAs IN CANADA



Legend

- Cities
- IBAs**
- ✗ Researched
- ⊗ Not Researched
- Rivers
- Lakes



Lapierre and Belanger, 2008

Stakeholder Perspectives



Voisey's Bay mine site (Photo: Vale Inco)

For Inuit – ensure proper use of land, reduce damages and ensure desired economic benefit

For Industry – long-term relationships needed for mining project's success, company reputation, risk mitigation

For Government – ensure success of IBA as policy complement



Voisey's Bay Mine

1992 Beginning of explorations
2002 Signing of IBA
2005 Starting production



Voisey's Bay, Port facility in Anaktalak Bay, Labrador (Photo: Vale Inco)

IBA in Nunatsiavut

16 sections to the agreement
Plus shipping agreement

Examples:

Inuit Education and Training
Inuit Business Opportunities
Employment of Inuit (41%)
Workplace Conditions
Environmental Protection



Strengths of IBAs



Voisey's Bay, Labrador (Photo: Vale Inco)

- Legal empowerment
(recognizes Inuit authority)
- Bargaining tool
(enables good governance)
- Best available tool



Strengths of IBAs



Fish spawning platform, Meadowbank, Kivalliq region, north of Baker Lake (Photo: Agnico-Eagle Mines Ltd.)

- Gives power to community
- A flexible tool - communities choose on what and how to spend – community centre, recreation facilities, training etc.
- Impacts future well-being



Weaknesses of IBAs



Mary River mine, 100 km road, north Baffin Island, Nunavut (Photo: Baffinland)

- Negotiators' mindset oriented on direct economic results
- Well-being issues difficult to negotiate – jobs come first
- Priority social issues not addressed: housing, child care, family counseling, activity facilities

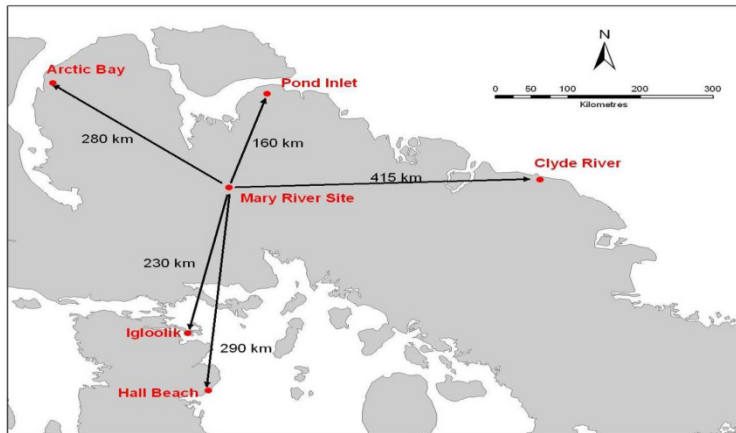


Challenges of current IBAs

Social benefits recognized

... but not high enough
on IBA agenda

... and do they conflict
with government
policies and services?



Mary River mine, Milne Inlet, north Baffin Island, Nunavut (Photo: Baffinland)



Challenges of current IBAs



Mary River mine, Milne Inlet, north Baffin Island, Nunavut (Photo: Baffinland)

- Negotiation secrecy not helping - learn from others' experience
- Defining one overarching goal
- Difficulty to negotiate and attach value metrics



Economic benefits and community well-being

Challenge:

- Not an automatic relationship
- Economic development not a panacea

Opportunity:

- There is a need to formulate goals
- Without implementation no result



Opportunities to choose from

- Open up the process to let others learn of practices
- Ensure that community well-being is top priority in IBA process



THANK YOU

Contact information:

Cathleen Knotsch, Email: cknotsch@naho.ca

